

Historic, archived document

Do not assume content reflects current scientific knowledge, policies, or practices.

INDEXED

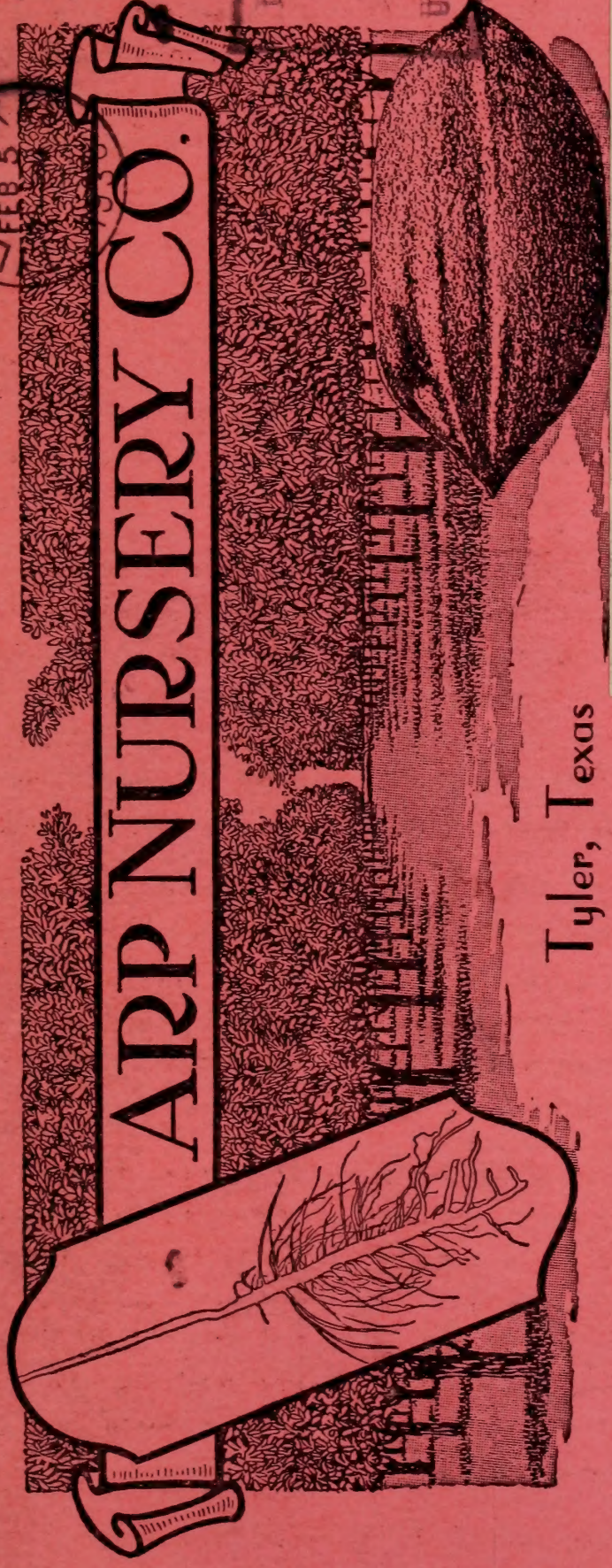
91038

62.83

TEXAS
FEB 5



LIBRARY
FEB 8 1938
U. S. Department of Agriculture



Tyler, Texas

TO _____

PECANS
FRUITS
ROSES

THE HOME OF BET

U. S. DEPARTMENT OF AGRICULTURE,
WASHINGTON, D. C.

BUREAU OF PLANT INDUSTRY
Fruit and Vegetable Crops and Diseases
M. R. N.

GPO 8-3591

Over 35 Years Nursery Experience

The name Arp Nursery Company is known throughout the South and Southwest wherever Better Rooted pecan trees, fruit trees and rose bushes are grown extensively, and wherever large commercial orchards are producing important crops. This firm is large enough to have acquired, in the course of 35 years, a reputation for sound business dealings, yet small enough to give every customer courteous, prompt and careful attention to each communication or order. An almost endless list of references for verification of financial responsibility can be furnished, among them the Tyler State Bank & Trust Company and Tyler Chamber of Commerce.

Every shipment of Arp-grown trees and plants is GUARANTEED to be satisfactory on delivery. Every piece of nursery merchandise sold is guaranteed to be just as represented, true to variety and grade, with a root system equaling that grown by any nursery in the world. Handling business in volume, with so many persons co-operating to serve the purchaser, mistakes do occur. If any nursery stock should prove untrue to name, or if on delivery trees are found to be not as represented, Arp Nursery Company will immediately refund purchase price or replace such stock, refunding or replacing to be at our option.

A blank order sheet inside back cover of this catalog is intended to save both customer and nursery time. Many errors in billing stock will be avoided if it is used. Merely select varieties, sizes, and amounts wanted, write them plainly with your name and complete address, and mail to ARP NURSERY COMPANY, P. O. Box 867, TYLER, TEXAS. Indicate, also, the date we are to ship and carrier you wish us to use. Your check, Money Order, or currency is always welcome.

Every order is promptly ACKNOWLEDGED, so that customers may know money is received and nursery stock booked for shipment as directed. Immediately following shipment, full INVOICE is mailed for your checking of trees and plants on arrival. This service increases expense of handling small orders, but under this system no customer need worry about the movement of money and trees between stations, for he is always advised by mail.

Nursery stock is packed free of charge in sturdy bundles, each variety and size clearly labeled. Trees and plants are carefully arranged for safe shipment. Roots are fully protected for as long as two weeks in transit. Located on the mainline of the Missouri Pacific Railway, Arp Nursery Company is well situated to ship cheaply and quickly by Express, Railway Freight, Motor Freight or Parcel Post. Small bundles go best by mail. Do not send postage when ordering fruit trees over four feet tall, or pecan trees over three feet because bales will be larger than postal regulations permit.

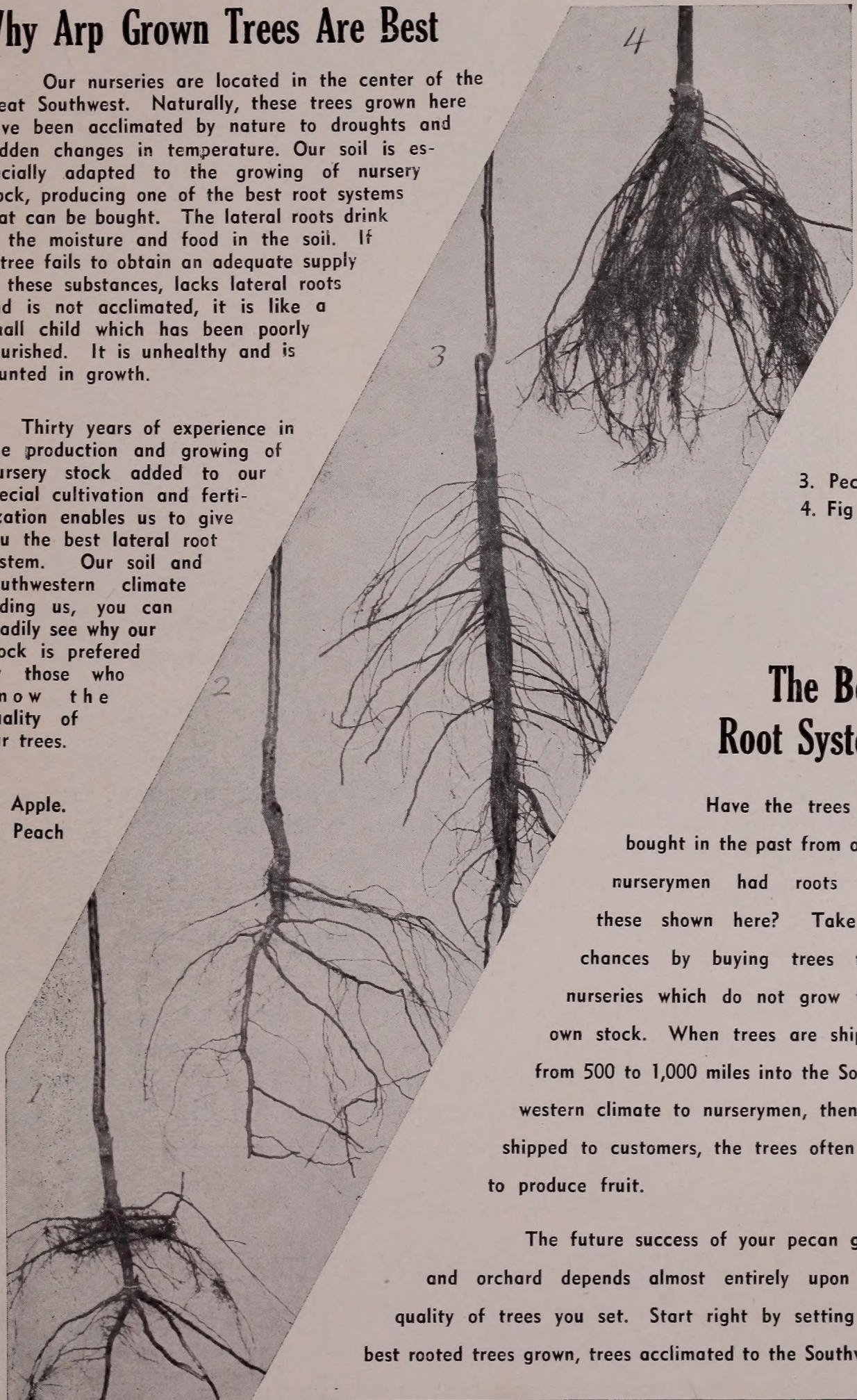
Arp Nursery Company grows only BARE-ROOTED nursery stock that can be shipped at small cost by express, motor freight or parcel post.

Why Arp Grown Trees Are Best

Our nurseries are located in the center of the great Southwest. Naturally, these trees grown here have been acclimated by nature to droughts and sudden changes in temperature. Our soil is especially adapted to the growing of nursery stock, producing one of the best root systems that can be bought. The lateral roots drink in the moisture and food in the soil. If a tree fails to obtain an adequate supply of these substances, lacks lateral roots and is not acclimated, it is like a small child which has been poorly nourished. It is unhealthy and is stunted in growth.

Thirty years of experience in the production and growing of nursery stock added to our special cultivation and fertilization enables us to give you the best lateral root system. Our soil and Southwestern climate aiding us, you can readily see why our stock is preferred by those who know the quality of our trees.

1. Apple.
2. Peach



3. Pecan
4. Fig

The Best Root System

Have the trees you bought in the past from other nurserymen had roots like these shown here? Take no chances by buying trees from nurseries which do not grow their own stock. When trees are shipped from 500 to 1,000 miles into the Southwestern climate to nurserymen, then re-shipped to customers, the trees often fail to produce fruit.

The future success of your pecan grove and orchard depends almost entirely upon the quality of trees you set. Start right by setting the best rooted trees grown, trees acclimated to the Southwest.

The Home of Better Rooted Trees

The Paper Shell Pecan



A WELL CARED FOR PAPER SHELL PECAN GROVE

The pecan is a native tree of the Southwest. Trees two to three hundred years old are still producing big crops. The South alone can grow paper shell pecans profitably, showing a production of fruit within a few years from the date of planting.

The planting and growing of paper shell pecans is now as safe as other crops. It has passed the experimental stage. Planting pecan trees is now an investment that will increase in value from year to year.

A pecan grove set now will enable you to welcome your future with no dread of dependence on others for your sustenance. Besides increasing in value from year to year, a pecan grove set now will **PAY YOU AND YOUR CHILDREN AND YOUR CHILDREN'S CHILDREN** yearly dividends from its paper shell nuts.

For your future and
Your children's future—
PLANT PECANS

Pecan Groves

With planted-in fruits and row crops

If you are located in a fruit section, plant peaches, plums, figs, or any other fruit suitable for your location. between the rows of pecans. The fruit trees will develop normally and will not interfere with the growing of the pecan trees for ten to twelve years. Pecans are set at a good distance, fifty to sixty feet, which they will require in later years. If the ground is set in fruits, you can grow cotton and other farm crops, first, second and third years after setting trees. After that time, however, the pecan and fruit trees will take up practically all the ground. At the age of three to four years, the peaches and plums will begin bearing, yielding good crops for six to ten years before the pecans will be large enough to require the space occupied by fruit trees. Your pecans will begin producing in paying quantities eight to ten years from date of planting, with the income increasing from year to year thereafter. If your land and location is not suitable for fruits you can grow row crops for years with a good yield from your pecan investment.

Below: A 4-ft. tree from our nursery. These trees live, grow and produce.



This method of setting fruit trees between the pecans has been proved by some of our largest growers of pecan groves to be one of the best methods of planting and making the grove pay its own way.

Success With Pecans

Success or failure depends almost entirely on the quality of the tree you plant. The root system of a young pecan tree gathers up the plant food and moisture from mother earth. A tree without a good supply of lateral roots and a reasonable amount of tap root gets no food supply, no moisture, and naturally makes a poor growth. It will barely live, produce few nuts, be unprofitable—in fact, a complete failure. With a good lateral root system, a reasonable amount of tap root and properly set, a pecan grove will produce big crops, meaning success and wealth to you.

**We GROW The Trees We SELL
and SELL The Trees We GROW**

Over 35 Years Nursery Experience

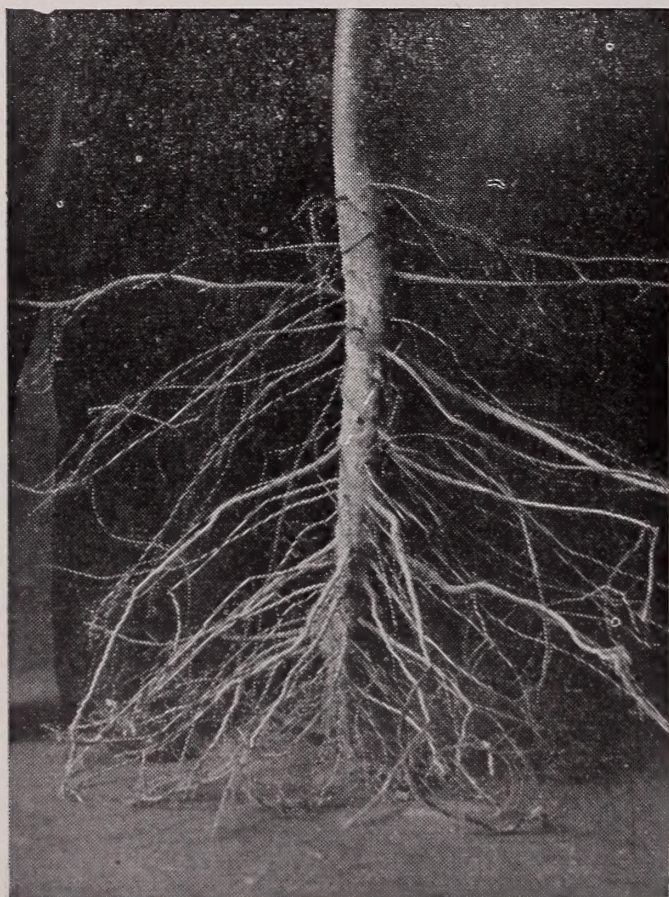
Pecan Soils

Most of the land in the Southwest will grow pecans profitably. Practically all bottom land, unless too wet or too sour, is ideal; hilly land where water is found between ten and thirty-five feet is excellent. Plant pecans on land that will grow cotton and corn, for like other crops, pecans will grow fastest where the land is strongest. In all our experience we have found that only stiff clay or thin soil with a hard pan near the surface will make a pecan grove unprofitable.

Size of Trees

In our opinion, a thrifty, well rooted tree is the first consideration in setting pecan trees. The size of the well-rooted tree is governed by its age. A well-rooted tree three to five feet, usually has a two or three year old root system with a one year graft or bud growth. Trees well-rooted five to eight feet usually have a three year old root system with one or two year graft or bud growth. Trees well-rooted eight feet up, usually have a four to five year old root system with two or three year graft or bud growth. We have found that trees from three to ten feet, with a good lateral root system and a reasonable amount of tap root, are being transplanted with the best success. Therefore, we do not recommend a certain size, but we do suggest when selecting sizes that you take into

consideration that the larger and older trees will begin bearing earlier than the smaller ones.



SHOWING THE ROOT SYSTEM OF ONE OF OUR 2½ YEAR OLD PECAN TREES

Varieties

In planting commercial orchards, two to five varieties should be used. Varieties selected should be governed by your location. For East Texas, Louisiana, Arkansas and Eastern Oklahoma, we advise planting Stuart, Success, Schley, Delmas, Money Maker and Burkett; for Central Texas and Western Oklahoma, Stuart, Success, Schley, Delmas, Burkett, Halbert and Texas Prolific; for Coastal sections, Stuart, Success, Money Maker; for West Texas and New Mexico, Halbert, Burkett, Texas Prolific, with a small per cent of Success, Schley, Delmas and Stuart.

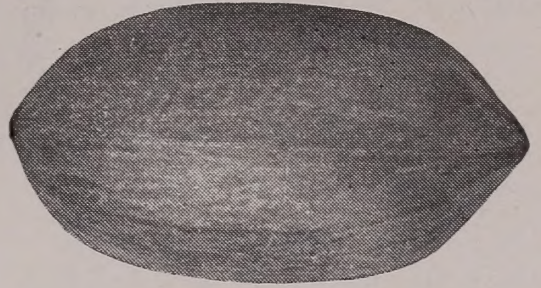
The Home of Better Rooted Trees

EASTERN VARIETIES



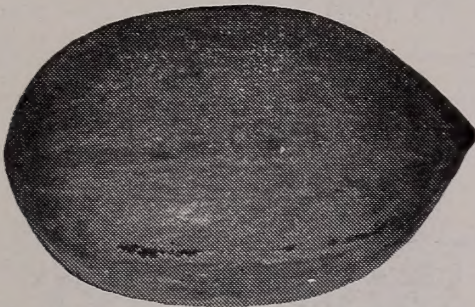
STUART

The Stuart is the leading pecan, being suited to more sections of the country than any other variety. The nuts are large to very large, usually well filled, medium to heavy bearers.



DELMAS

Nuts large, shell moderately thin, kernel plump, heavy bearer. Tree is vigorous with beautiful foliage.



SUCCESS

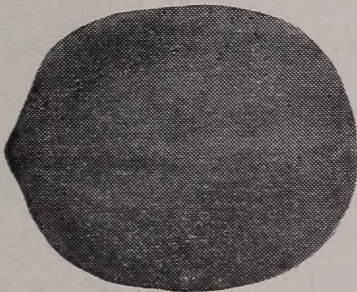
The Success is a first class pecan. Nuts are large to medium, thin shell cracks well. The kernel is plump and heavy, excellent flavor; strong growing tree, early bearer.



SCHLEY

Very thin shell nut, large, plump kernel, fine flavor; rapidly growing tree. Nuts sell for highest market price, but not quite so prolific as some of the other varieties. However, the Schley is an ideal pecan, and its quality makes up for its shy bearing.

WESTERN VARIETIES



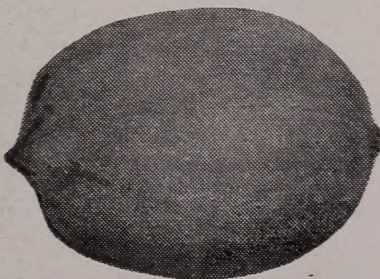
BURKETT

One of the favorites of West Texas, trees very healthy and regular bearers, medium size nuts, well filled and good flavor.



TEXAS PROLIFIC

Nuts large, shell of medium thickness, kernel plump, rich and sweet. It is a heavy and early producer; trees healthy and fast growers.



HALBERT

One of the most prolific of all varieties, very early bearer, medium size nut, very thin shell, excellent flavor. Young trees are willowy in appearance but become straight as they grow older. Nuts ripen early.

Arp Nursery Company, Tyler, Texas

PRICE LIST of Paper Shell Pecan Trees

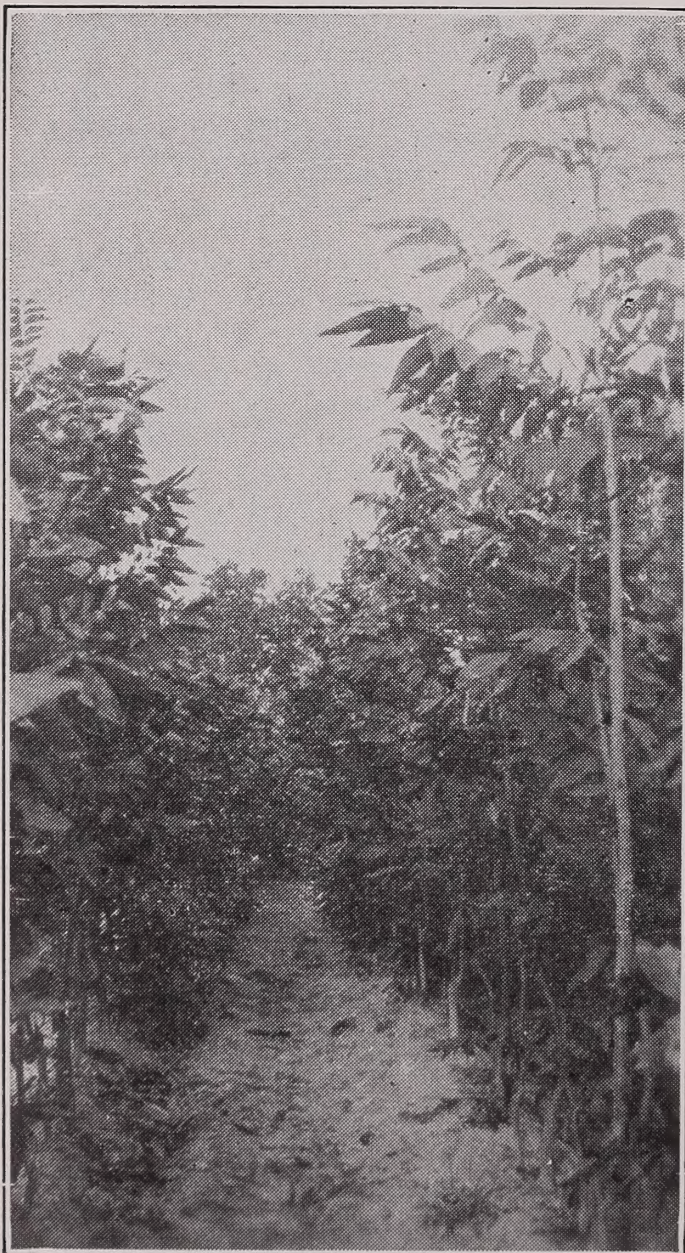
(F. O. B. OUR SHIPPING POINT)

VARIETIES

Stuart, Success, Delmas, Schley, Money Maker, Burkett, Texas Prolific
Halbert, Western Schley.

SIZE OF TREES	PRICE EACH	10 To 49 TREES	50 To 99 TREES	100 To 499 TREES
2 to 3 feet.....	.65	.55	.50	.40
3 to 4 feet.....	.70	.60	.55	.45
4 to 5 feet.....	.80	.70	.60	.50
5 to 6 feet.....	\$1.00	.90	.80	.60
6 to 7 feet.....	\$1.25	\$1.10	\$1.00	.75
7 to 8 feet.....	\$1.50	\$1.35	\$1.25	\$1.00
8 to 10 feet.....	\$2.00	\$1.75	\$1.50	\$1.25

For quantities of 500 or more trees, write us for special prices, giving varieties and sizes wanted.



SHOWING OUR VIGOROUS AND HEALTHY PECAN STOCK AS IT LOOKS IN THE NURSERY ROW.

Our Guarantee

We guarantee our trees to be just as represented and our root system to equal that of any nursery in the world. If upon receipt of trees, you do not find them to be as represented, return them and we will gladly furnish satisfactory trees or refund the purchase price. We do everything in our power to keep our stock pure and true to name. However, we realize that errors are possible. In the event that any nursery stock should prove untrue to name, and purchaser should thereby sustain damages, we hereby agree, upon proper proof, to replace such stock as may prove untrue to name under which it is sold, or to refund purchase price, refunding or replacing to be at our option.

Arp Grown Trees Are Always Better

Peaches

May Varieties

MAYFLOWER—(Semi-Cling)—White with red cheek, one of the best early peaches, good shipper. Ripens first of May.

VICTOR—(Semi-Cling)—Well known variety, ripens first of May.

EARLY WHEELER—(Semi-Cling)—Cream with red cheeks, large and handsome, extra fine for commercial purposes. Ripens last of May.

June Varieties

ARP BEAUTY—(Semi-Cling)—Yellow with bright blush, highly flavored, ripens first of June.

GOLDEN JUBILEE—(Freestone)—Large, good color and flavor. A fine shipper like Elberta. Heavy bearer.

LATE ARP BEAUTY—(Semi-Cling)—Large yellow with beautiful red cheek, brings fancy prices on the market, one of the best home and commercial peaches. Ripens about June 15th.

MAMIE ROSS—(Semi-Cling)—Large, white with red cheek, one of the best varieties. Ripens 10th to 15th of June.

CARMAN—(Semi-Cling)—Large, white with deep blush, skin tough, juicy, brings good price on market. Ripens 15th of June.

HILEY—(Freestone)—Good size, well colored with red, best of quality, a good shipper and prolific bearer.

SLAPPY—(Freestone)—Yellow, delicious flavor, a fine peach. Ripens 20th of June.

Special Fruit Tree Offer No. 1

F. O. B. Our Shipping Point

All Trees Four to Five Feet High

For \$17.50 and ten names and addresses of your neighbors (land owners), who would likely be interested in trees, we will ship you the following list of trees:

PEACHES—5 Mayflower, 5 Arp Beauty, 5 Mamie Ross, 15 Elberta, 5 Chinese Cling, 5 Lemon Cling, 5 Stenson October, 5 Red Indian.

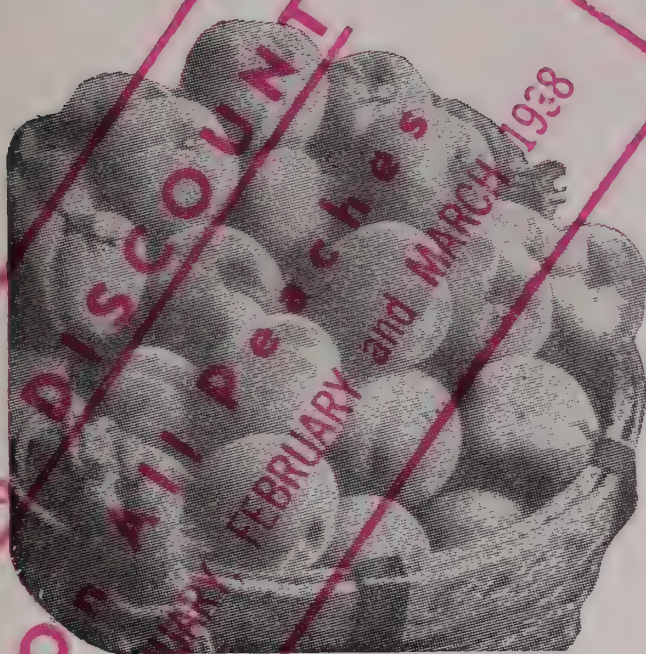
PLUMS—3 Six Weeks, 3 Burbank, 3 America, 3 Gold.

FIGS—3 Celestial, 2 Magnolia.

GRAPES—4 Concord, 4 Niagara, 4 Delaware, 4 Carman.

APRICOTS—2 Apricots.

A total of 85 trees which are worth \$24.70 at our catalog prices; all to you for ten names and addresses and \$17.50.



The Home of Better Rooted Trees

July Varieties

- ELBERTA—(Freestone)—The old, well known variety. Ripens July 5th to 10th.
- BELL OF GEORGIA—Very large, white with red cheek, an all around peach, firm. Ripens 15th of July.
- VIOLA—(Freestone)—Yellow flesh, thick skin, sprightly taste, larger than Elberta. Matures July 15th.
- CHINESE CLING—(Cling)—A well known variety, juicy and sweet.
- J. H. HALE—(Freestone)—Fruit large, deep golden, excellent flavor. One of the best varieties. Ripens 20th of July.
- EVERBEARING—(Freestone)—This peach ripens in three crops; first in July, last crop about September 1st, Indian type; first crop large, second smaller, and third still a size smaller, a very sweet peach, every one should set a few trees of this variety in their home orchard.
- ELBERTA CLING—(Cling)—Large, yellow. Good shipping qualities, like Elberta.

August Varieties

- GENERAL LEE—(Cling)—Ripens first of August. Good bearer, large, white.
- AUGBERTA—(Freestone)—Like the Elberta in size, looks and flavor. A good market peach. Ripens 5th to 10th of August.
- MIXON CLING—(Cling)—Large, yellowish white with red cheeks, delicious flavor, a beauty. Ripens first of August.
- LEMON CLING—(Cling)—Large, oblong, yellow with red cheeks, flesh yellow.
- HEATH CLING—(Cling)—Large, creamy white, flesh firm, ripens last of August.
- HENRIETTA—(Cling)—Large, yellow, flesh firm, ripens last of August.
- RED INDIAN—(Cling)—Red flesh, the old time Indian peach, ripens in August.
- YELLOW INDIAN—(Cling)—Yellow flesh, fine flavor, good for home orchard, ripens in August.

October Varieties

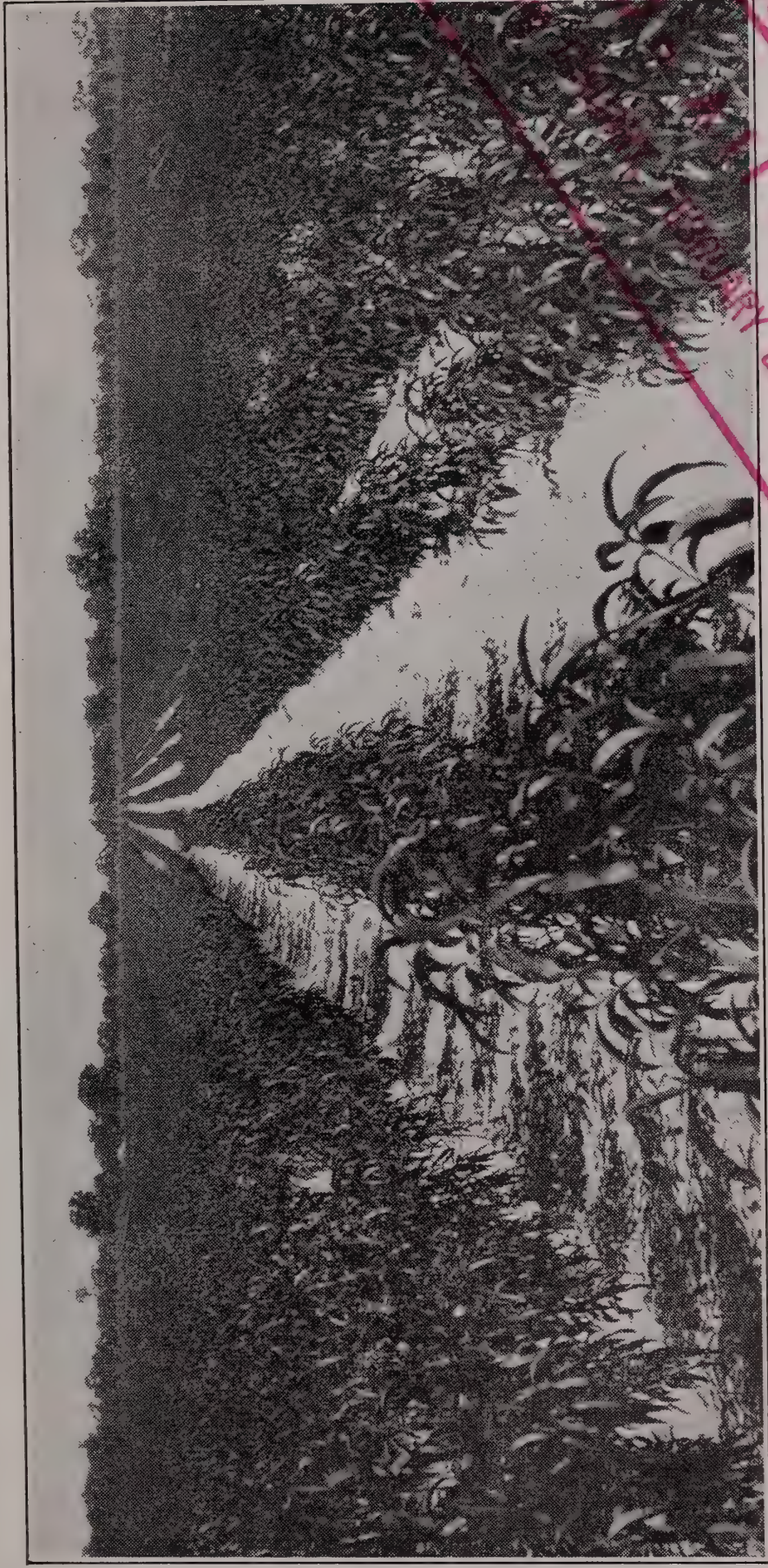
- STESON OCTOBER—(Cling)—White, a well known variety.

Prices of Peach Trees

F. O. B. Our Shipping Point

SIZES OF TREES	Price Each	Price Each	Price Each
	Lots of 1 to 25	Lots of 25 to 100	Lots of 100
18 to 24 Inches.....	.15	.12½	.10
2 to 3 Feet.....	.20	.15	.12½
3 to 4 Feet.....	.25	.17½	.15
4 to 5 Feet.....	.35	.25	.20
5 to 7 Feet (2-Years).....	.40	.30	

If interested in larger quantities for commercial planting, write us for special prices, giving varieties and number of trees wanted.



A View of our Peach Stock as it Looks in Nursery

During the month of
JANUARY and FEBRUARY
25% DISCOUNT
1938

PLUMS

MAY VARIETIES

SIX WEEKS—Large, yellow with red, a profitable plum.

JUNE VARIETIES

COMPASS CHERRY—Cross between the cherry and plum, fruit medium size, color reddish yellow.

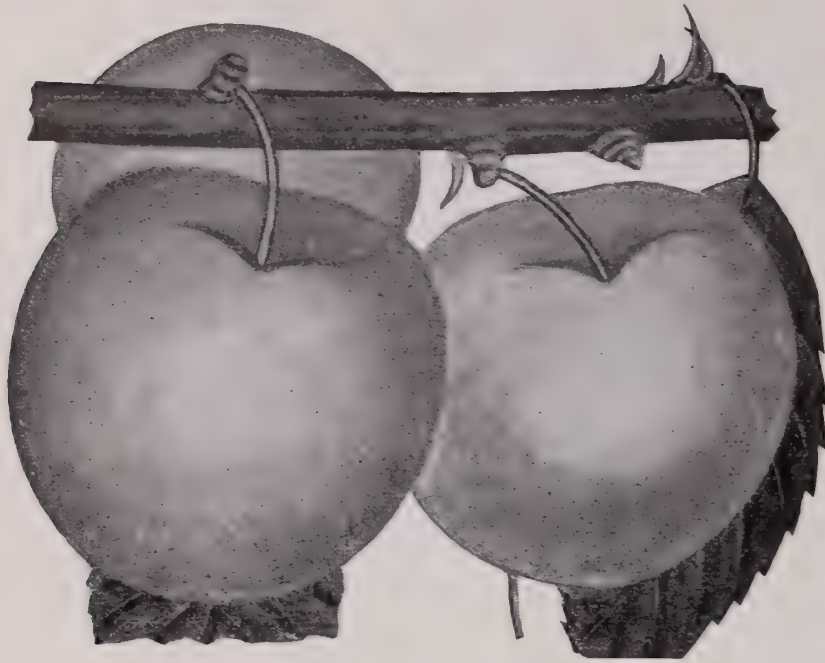
BRUCE—Ripens early, firm for shipping, large, delicious flavor, good bearer.

WILD GOOSE—An old favorite, preferred for home use.

RED JUNE—Very red, growing in clusters.

JULY VARIETIES

GOLD—Large, yellow with red cheek, a good bearer and one of the best.



AMERICA PLUM

AMERICA—Large, yellow with red cheek, tree fast grower, a fine commercial plum.

BURBANK—An old variety, fruit red dotted with yellow, a good bearer.

BOTAN OR ABUNDANCE—Flesh yellow, a good shipper, and an abundant bearer.

BLUE DAMSON—Hardy and prolific. Small blue fruit.

AUGUST VARIETIES

WICKSON—Fruit very large, an old variety, very popular.

SEPTEMBER VARIETIES

GOLDEN BEAUTY—Golden when ripe, a very heavy bearer, good for preserves and jelly.

Prices On Plums

(F. O. B. Our Shipping Point)

SIZE OF TREES	Price Each	Price Each	Price Each
	Lots of 1 to 25	Lots of 25 to 100	Lots of 100 to 1,000
18 to 24 Inches.....	.20	.17½	.15
2 to 3 feet.....	.25	.20	.17½
3 to 4 feet.....	.30	.22½	.20
4 to 5 feet.....	.40	.30	.25
5 to 7 feet (2-year).....	.50	.40	

Our best advertisers are the thousands of satisfied PATRONS we have throughout Texas and adjoining states. Our GRADES, SERVICE and ROOT SYSTEM bring us new and repeated orders from communities where our varieties and superior products are known.

APRICOTS

VARIETIES

MOORPARK—Large, yellow with green flesh. Separates readily from the seed.

ROYAL—Large, hardy golden fruit. Productive.

Prices of Apricots

(F. O. B. Our Shipping Point)

2 to 3 feet—25c each; 3 to 4 feet—35c each

4 to 5 feet—50c each



MOORPARK APRICOT

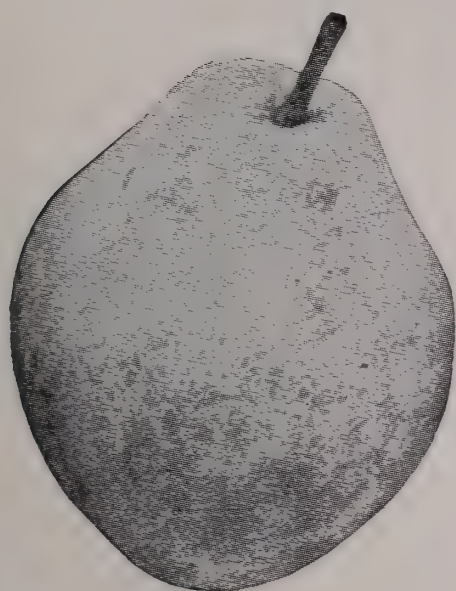
NECTARINES

DIAMOND JUBILEE NECTARINE—A combination fruit to make every home orchard complete, the Diamond Jubilee Nectarine ripens in July. This is the apricot cross that looks like a plum, has a small peach seed, apricot meat, and the tastiest flavor of all three.

PRICES OF NECTARINES

(F. O. B. Our Shipping Point)

2 to 3 feet—25c each; 3 to 4 feet—50c each; 4 to 5 feet—75c each



KIEFFER PEAR

PEARS

VARIETIES

GARBER—Fruit large, yellow in color with red cheeks, a good keeper, choice variety for the South; ripens in August.

KIEFFER—A well known pear; fruit very large, grown successfully in all sections; trees resist blight, very vigorous, immensely productive; ripens in September.

Prices of Pears

(F. O. B. Our Shipping Point)

SIZE OF TREES	Price Each		Price Each	
	Lots of		Lots of	
	1 to 9	10 to 99	100 & Up	
3 to 4 feet.....	.35	.30		.25
4 to 5 feet.....	.45	.40		.35

APPLES

VARIETIES

RED JUNE—One of the best early apples, red, flesh white and crispy, a good table and market apple.

YELLOW TRANSPARENT—Fruit large, yellow, good quality, tree very hardy and bears young, ripens in June.

JONATHAN—Fruit brilliant red, delicious flavor, one of the surest bearers, tree hardy, a splendid variety for home orchards. Ripens in September.

MAMMOTH BLACK TWIG—Fruit yellow shaded with red, a good bearer and trees very hardy. Ripens September to November.

WINE SAP—An old variety, well known, one of the best of keepers, good for home and commercial orchards. Ripens from September to October.



DELICIOUS APPLE

ARKANSAS BLACK—Fruit dark red, medium size, excellent flavor, ripens in October.

DELICIOUS—Fruit large, dark red, flesh crisp and melting, juicy, highest quality, now taking first place for commercial and home orchards. Ripens in the late fall.

RED DELICIOUS—Large, red with crisp and juicy flesh. The Red Delicious is a hardy grower.

YELLOW DELICIOUS—Like Delicious and Red Delicious, this apple has the best characteristics of color, size, taste and market value.

Prices of Apples

(F. O. B. Our Shipping Point)

SIZE OF TREES	Price Each	Price Each	Price Each
	Lots of 1 to 9	Lots of 10 to 99	Lots of 100 & Up
3 to 4 feet.....	.35	.30	.25
4 to 5 feet.....	.45	.40	.35

FIGS

MAGNOLIA—Fruit large, pale violet, flavor excellent; bears on one year stem. The leader for commercial orchards in the Coast Belt Section.

CELESTIAL—Fruit medium size, delicious flavor, a good bearer; one of the best varieties for Texas (North of Coast Section), Oklahoma, Arkansas and similar climates.

BROWN TURKEY—Oblong, red flesh, dark brown, delicious, prolific.

SIZE OF TREES	Price Each	Price Each	Price Each
	Lots of 1 to 9	Lots of 10 to 99	Lots of 100 & Up
2 to 3 feet.....	.35	.25	.20
3 to 4 feet.....	.50	.35	.25
4 to 5 feet.....	.60	.45	.35

Over 35 Years Nursery Experience



CONCORD GRAPE

Grapes

VARIETIES

MOORE'S EARLY—Fruit large, black, has good flavor, fine market grape, good for home planting; vine vigorous; ripens in June.

NIAGARA—Fruit large, greenish white, large cluster, good quality, successful in nearly all sections; ripens first of July.

CONCORD—Fruit large, black, the best known of all varieties, one of the best for home or market; ripens in July.

CARMAN—Vine very thrifty, does well on any kind of soil, grapes large, compact cluster, a fine eating grape, one of the best varieties; ripens about August 10th.

DELAWARE—Fruit small, compact cluster, juicy with a sweet delicious flavor, standard variety for table and market use; ripens last of August.

Prices of Grapes

(F. O. B. Our Shipping Point)

	Each	Lots of 12 to 24	Lots of 25 to 100
1 Year Plants (well rooted and branched).....	.20	.15	.12
2 Year Plants (well rooted and branched).....	.25	.20	.15

Japanese Persimmons

VARIETIES

TANI-NASHI—The best known and most popular variety in general. Fruit large, early bearer, early ripener and productive.

OKAMI—Fruit good flavor, color red when ripe, a good keeper, bears heavily in clusters; practically seedless.

Prices of Japanese Persimmons

(F. O. B. Our Shipping Point)

SIZE OF TREES	Price Each	Price Each Lots of 10
3 to 4 feet.....	.70	.60
4 to 5 feet.....	.80	.70

Arp Nursery Company, Tyler, Texas



A WELL KEPT BERRY PATCH

STRAWBERRIES

IMPROVED LADY THOMPSON—This is one of the favorites of many growers; early, a delicious flavor, good color and a good shipper; can't be beat for home use, and finds ready sale on the market.

IMPROVED KLONDIKE—The old reliable, medium early, blood red, firm. One of the best for all around purposes that can be bought.

BLACKBERRIES

McDONALD—medium size, firm, good shipper, plant other berries near it to pollenize. It is early; ripens with Austin Dewberry.

LAWTON—Vigorous grower, one of the leaders for commercial planting in East Texas.

DEWBERRIES

AUSTIN—We have found this berry by far the best of all varieties for this section, therefore, we offer only this variety. It is very large, much larger than our wild dewberries, blooms late; ripens a little later than the native dewberry.

YOUNGBERRY

THE YOUNGBERRY is a cross between the Loganberry and the Dewberry. It is becoming more popular as people learn that it combines the best qualities of all berries. Excellent for canning.

PRICES OF BERRIES

(F. O. B. OUR SHIPPING POINT)

STRAWBERRIES—Lots of 25—50c; Lots of 100—\$1.00; Lots of 500—\$3.00; Lots of 1,000—\$5.00

BLACKBERRIES—Dozen—\$1.00; Lots of 100—\$6.00; Lots of 1,000—\$20.00

DEWBERRIES—Dozen—75c; Lots of 100—\$4.00; Lots of 1,000—\$12.00

YOUNGBERRIES—Dozen—75c; Lots of 100—\$4.00; Lots of 1,000—\$20.00

HEDGE PLANTS

There is nothing that will improve the looks of your home as much as a well kept hedge set in the background or on a drive or walkway. The cost is small. Hedge plants should be set 12 to 24 inches.

VARIETY

AMOUR RIVER PRIVET—(South)—Most popular and best hedge for the Southwest. Beautiful evergreen, dense in growth, dark, very compact, establishes a good hedge in one year. Beautiful and permits shearing to any height or shape.

PRICES OF HEDGE PLANTS

(F. O. B. OUR SHIPPING POINT)

SIZE OF PLANTS	PRICE EACH	PRICE EACH	PRICE EACH
	LOTS OF 10 TO 24	LOTS OF 25 TO 99	LOTS OF 100 & UP
18 to 24 Inches.....	.06	.05	.04
2 to 3 feet.....	.07	.06	.05
3 to 4 feet.....	.08	.07	.06
4 to 5 feet.....	.10	.09	.08

Over 35 Years Nursery Experience

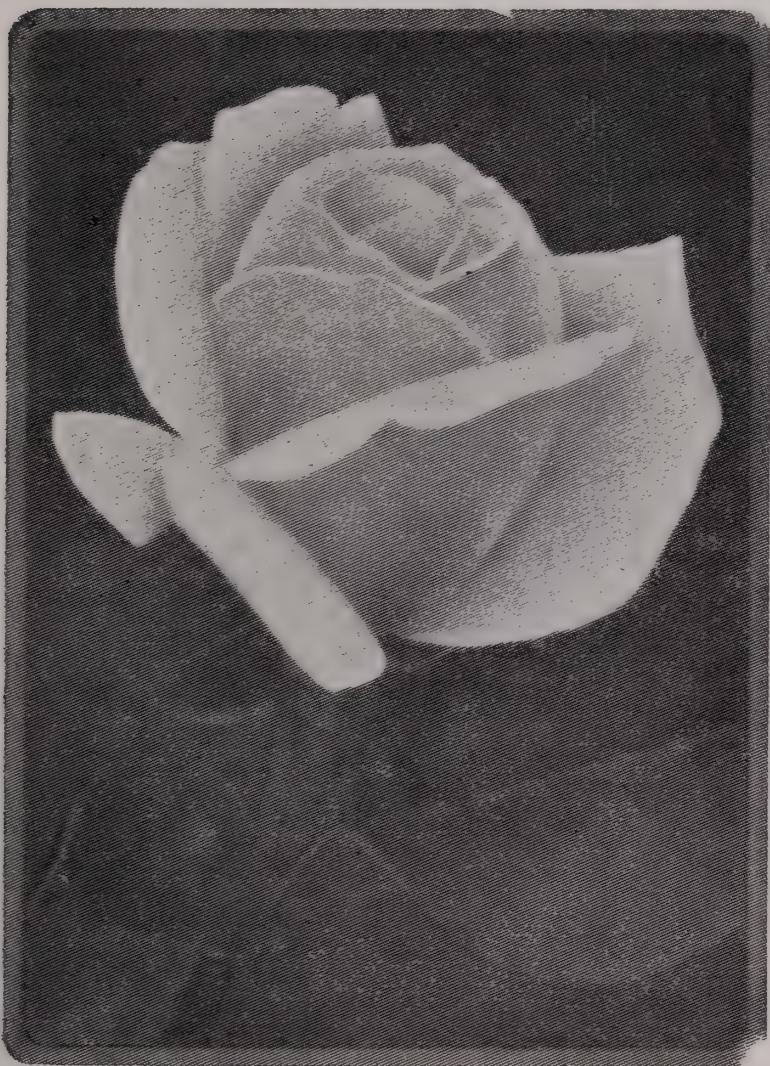
ROSES

PLANT YOUR YARD AND GARDEN WITH COLORFUL ROSES
AND ADD VALUE TO YOUR PROPERTY

Varieties

BUSH ROSES—(Red)

RED RADIANCE—Very much like pink radiance, except that blooms are a beautiful red color; both bud and blossom are beautifully formed. Bush very vigorous.



PINK RADIANCE

PAUL NEYRON—A very large, double light red rose; can often be cut with 3 feet stems; very few side branches. Almost no thorns; a free bloomer.

AMERICAN BEAUTY—Popular because of its fragrance, large crimson buds. Free bloomer with healthy stock.

JOHN RUSSELL—Bears large and deep red blooms. Vigorous flower.

FRANCES SCOTT KEY—Good bloomer, extra large and compact blooms, light crimson, erect and heavy foliage bushes.

HOLLYWOOD—Dark red, lasting buds of oblong shape, very fragrant.

CHARLES K. DOUGLAS—Buds long and tapering. Crimson-scarlet in color. Healthy bush.

ETOILE DE FRANCE—Excellent for cut flowers, red-crimson blooms shading to cerise. Hardy stems.

LORD CHARLEMONT—Crimson-red, good bloomer, vigorous bush.

MARGARET MCGREDY—Orange-scarlet blooms. A vigorous growing bush supporting straight stems.

MCGREDY'S SCARLET—Buds bright scarlet, more fruitful in fall and spring.

E. G. HILL—Beautiful dark red buds, blooms are full to the center, compact, last long time on bush or cut, one of the leaders.

ETOILE DE HOLLANDE—brilliant red bloom, attractive free bloomer, one of the best.

AMI QUINARD—Crimson, large flowers, a good bloomer throughout the summer months; vigorous plants.

PATIENCE—Bright red buds with a deep orange shading at the base of the petals. Bush a fair grower.



KAISERIN AUGUSTA VICTORIA

BUSH ROSES—(Pink)

PINK RADIANCE—Light silver pink; free bloomer, one of the best plants, upright and vigorous.

COLUMBIA—A very beautiful pink, free bloomer all through the season, plants very hardy.

DAME EDITH HELEN—One of the best truly pink roses on the market, huge buds, shapely, erect stems, fragrant blossom.

PINK COCHET—Beautiful blooms, perfect buds, strong plant, constant bloomer.

WILLOWMERE—Yellow center shading to pink petals, constant bloomer, ready grower.

MRS. CHARLES BELL—Lovely shell pink (often called Shell Pink Radiance), beautiful buds, bush strong and healthy.

DAINTY BESS—Charming single flowers in large clusters of soft mauve-pink with petals of kidlike texture emphasized by a garnet crimson center, a tall growing plant.

J. L. MOCK—Flower extra large, varying from bright red from the outside of the petals to silver white inside, a good autumn bloomer.

MEV. G. A. VAN ROSSEM—Glowing apricot color, shading to yellow. Good foliage, flower large and double, fragrant, excellent bloomer.

PINK PEARL—Deep rose-pink flowers, produces full double blooms freely.

WM. F. DREER—Flowers shell pink tinted to buff. Good bloomer.

BETTY UPRICHARD—Copper-red buds, fragrant and excellent for cutting. Hardy bush.

EDITH NELLIE PERKINS—Two-toned, composed of salmon-pink in the pointed center shading to copper-red and orange. Free bloomer, few thorns.

FRANK W. DUNLOP—Free bloomer, large flowers, dark pink in color.

MME. BUTTERFLY—Fragrant, light pink buds touched with gold at base, hardy bush, long stems.

COUNTESS OF ILCHESTER—A fairly strong and thrifty Southern rose, making full buds of solid pink color.

Arp Grown Trees Are Always Better

BUSH ROSES—(Yellow)

LUXEMBURG—Yellow, proving to be one of the best. Long stems, pointed buds. Excellent cut flowers. Upright grower.

LADY HILLINGDON—Deep apricot yellow to orange, long pointed buds; a very fine flowering variety and a striking decorative rose, sturdy, spreading growth.

HOOVER—Yellow blending to orange blooms. Buds well formed, petals large and thick, free bloomer.

PADRE—Good bloomer, slender plant, scarlet blending to orange and yellow.

MRS. LOVELL SWISHER—Salmon pink flushed with gold blooms, one of the largest and strongest growers, large pointed buds.

TALISMAN—Colorful salmon and golden buds of exquisite shape. Blooms constantly and will produce in most places.

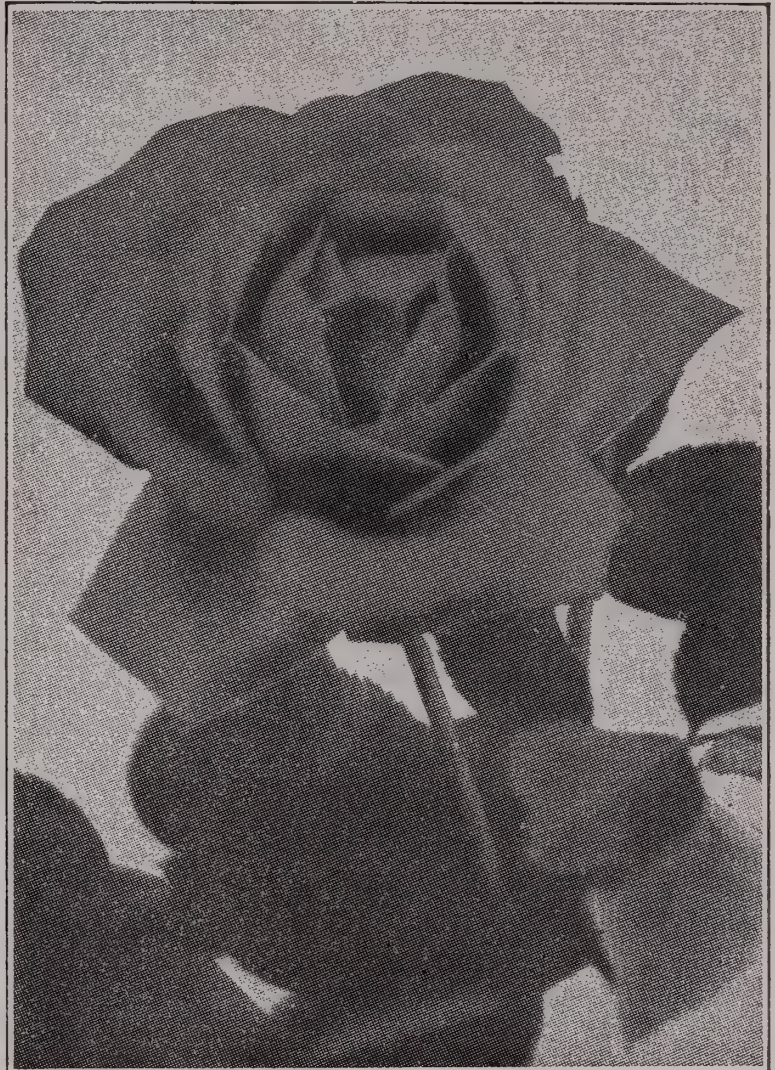
ROSLYN—Charming, pointed buds of golden yellow, a remarkable free bloomer.

AUTUMN—Flowers full double, bright yellow tinted with red. Unusual color, hardy.

JOANNA HILL—Strong grower, straight stems. Large full blooms in rich creamy yellow blending to orange at base.

JULIEN POTIN—Extremely pointed buds of deep yellow shading to primrose-yellow when open. Bears on long strong stems.

MRS. PIERRE S. DuPONT—Healthy bushes. Blooms rich golden yellow, full and double. Retains color until petals fall.



JOHN RUSSELL

BUSH ROSES—(White)

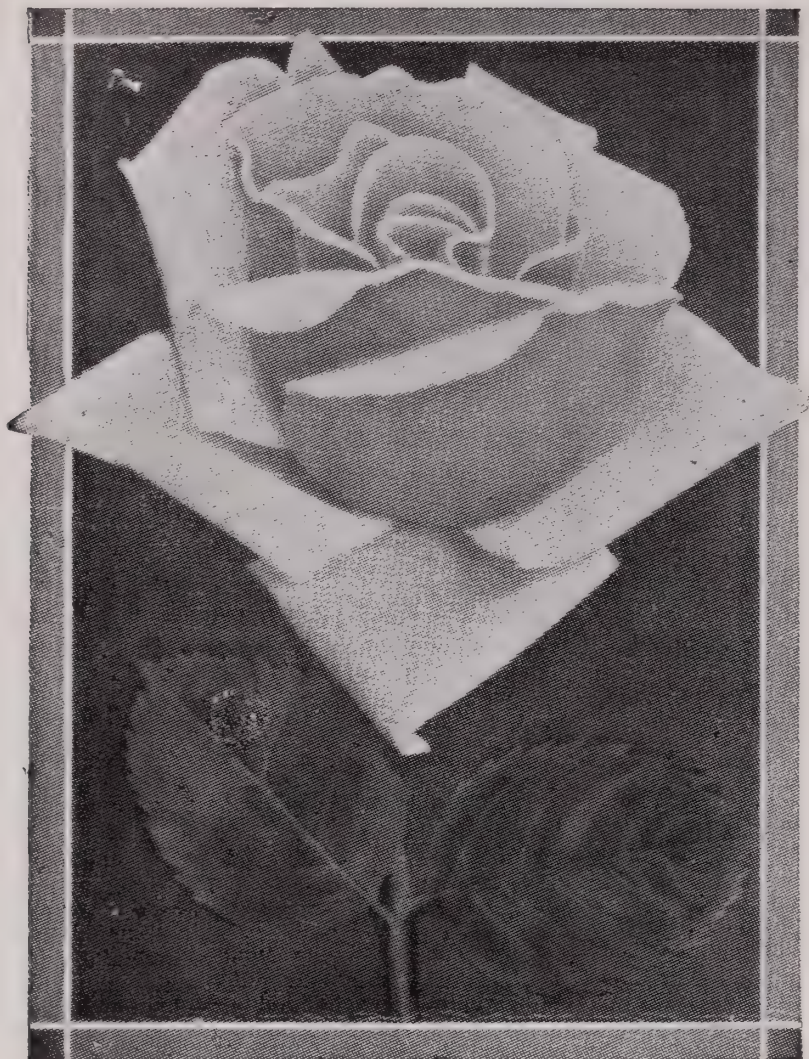
KAISERIN AUGUSTA VICTORIA—Pure white, large and double petals, one of the best white roses grown.

WHITE AMERICAN BEAUTY—Large buds and pure white flowers. Extra strong growth, long stems, fragrant.

CALEDONIA—Long, delicate, pure white buds, a very beautiful rose, bushes average growers.

ANTOINE RIVOIRE—Creamy white tinted with a delicate pink, full and double blooms.

KILLARNEY—Large pointed buds, opening into large and snowy white blooms. Hearty grower.



J. L. Mock

CLIMBING ROSES

KAISERIN AUGUSTA VICTORIA
—Pure white, vigorous, free bloomer, a good one.

METEOR—An old favorite, dark red blossoms, blooms all season.

RED RADIANCE—A strong climber. Buds and blooms like bush Red Radiance, a free bloomer.

TALISMAN — Yellow, vigorous bloomer, a very beautiful rose and a good one.

POLYANTHIAS

TIP-TOP—(Baby Doll) — Grows about 18 inches high, producing exquisite miniature blooms throughout the season. Crimson toning into pink and old gold.

CECILE BRUNNER—(Sweetheart Rose)—Miniature blooms light pink with tones of yellow at base. Opens into double blooms of delicate pink.

ELLEN POULSEN—Reaches about 20 inches in height. Blooms cherry pink on strong stems. Flowers large, moderately fragrant.

GOLDEN SALMON—Bears miniature buds of salmon-orange, lasting color, excellent bloomer. ideal for borders or low hedges.

PINK POLLY—Bears small pink flowers, good bloomer and hardy grower.

Prices of Roses

(F. O. B. Our Shipping Point)

Budded, 2-Year Old Plants, No. 1—each.....	.35	per dozen.....	\$3.00
(3 OR MORE CANES 18 INCHES UP)			
Budded, 2-Year Old Plants, No. 1½—each....	.25	per dozen.....	\$2.00
(2 OR MORE CANES 14 INCHES UP)			
Budded, 2-Year Old Plants, No. 2—each.....	.20	per dozen.....	\$1.50
(2 OR MORE CANES 12 INCHES UP)			
100 No. 1 Grade Bushes.....			\$15.00

The Home of Better Rooted Trees

Planting and Pruning Trees

IF NOT READY to set when trees are received, unpack, set in a trench, cover roots well with mellow earth, and water thoroughly.

TO PLANT TREES: Throw in, or take out, soil until the tree stands the same depth as it did in the nursery row. Then throw in soil. If dry, settle soil with bucket or more of water, mounding it up slightly, but do not pack. Then cut back top of tree 12 to 24 inches from the ground, according to size of tree.

PECANS should be set 2 to 3 inches deeper than they stood in the nursery row. Be sure to cut back top, but be careful to leave 3 to 4 "eyes" or buds above the point of the bud or graft, which can be easily determined by slight offset on the body of the tree.

ROSES—Trim off broken or bruised branches. Cut away all but four stems, leaving them about twelve inches long. Branches should be pruned 1-3 to 1-4 inch above the eye or bud. Set bushes in holes wider than the roots, setting the budded part of the plant just under the ground. Pack dirt without crowding roots and settle with water.

DISTANCE FOR PLANTING

Best distance for planting depends on the soil. If planting on rich soil, trees should be planted with more distance than when planting on thin soil. The following table shows the average distance your trees and plants should be set:

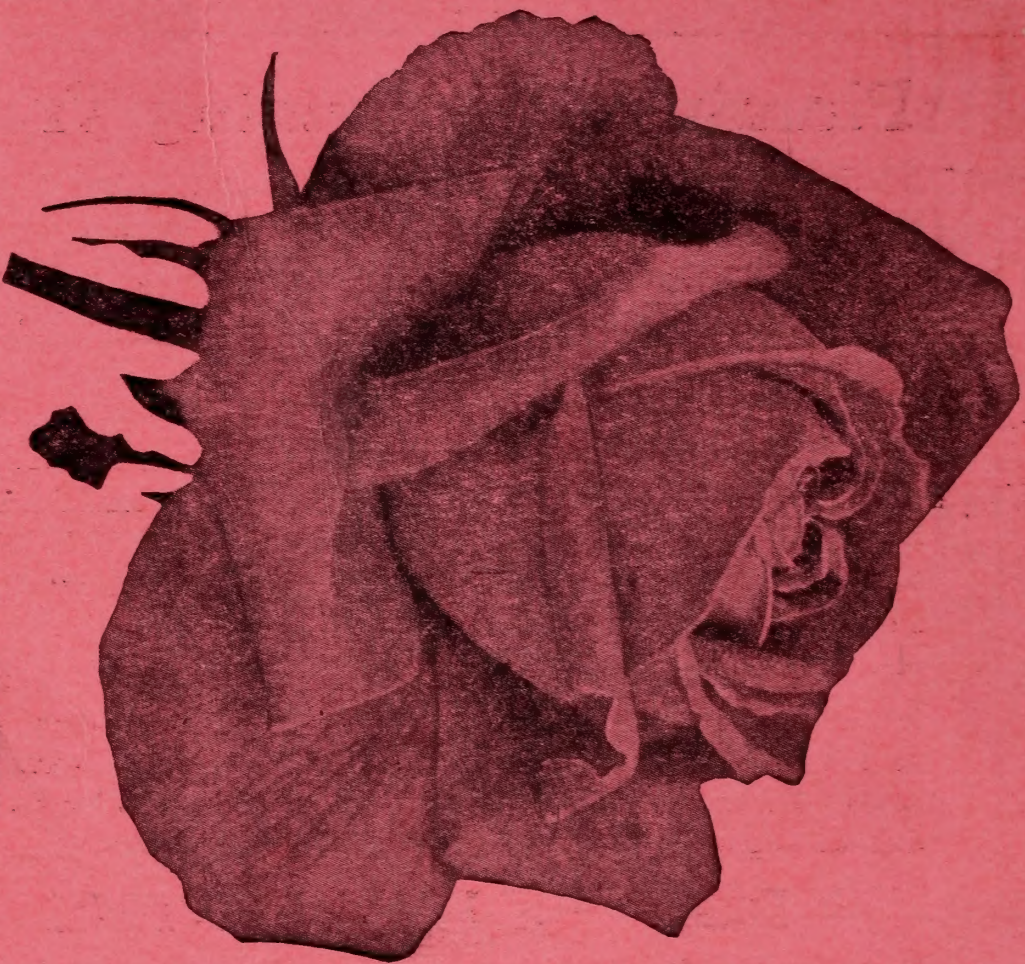
PECANS.....	40 to 60 FEET
PEARS.....	20 to 30 FEET
APPLES.....	20 to 30 FEET
PEACHES.....	18 to 25 FEET
PLUMS.....	15 to 20 FEET
FIGS.....	12 to 18 FEET
GRAPES.....	8 to 18 FEET
BLACKBERRIES.....	4 to 6 FEET
DEWBERRIES.....	4 to 6 FEET
STRAWBERRIES.....	1 to 4 FEET
ROSES.....	1½ to 3 FEET
CLIMBING ROSES.....	4 to 6 FEET

To Ascertain Number of Trees to Set to the Acre

Multiply distance between tree rows by distance between the trees in the row. Then divide 43,560 by this product.

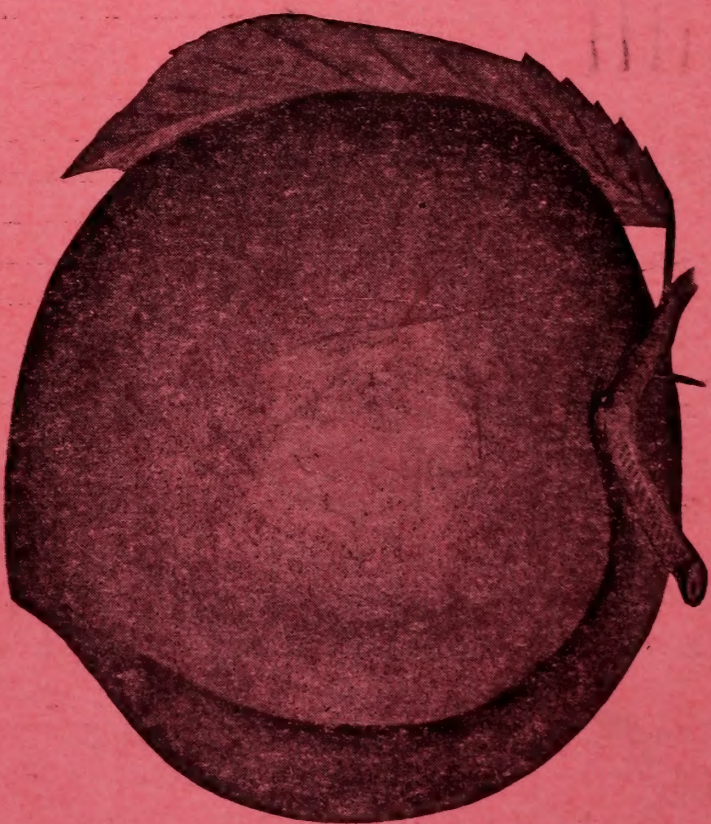
Example: Say your tree rows are 20 feet apart, and the trees in the row are 18 feet apart. Multiply 20 by 18; equals 360. Then, 43,560 divided by 360 equals 121, the number of trees required for an acre when set 20 by 18.

THE SHIPPING SEASON begins about November 1st, and continues on through April 1st, but it is better to transplant trees as early as possible after the leaves have shed. A tree transplanted in the early fall will, by spring, have grown sufficient new roots to give it a quick growth as soon as active vegetation begins.



**Arp
Nursery
Company**

W
P. O. Box
867
Tyler,
Texas



Special Orchard Offer No. 2

100 Trees Prepaid \$10.00

ALL FIRST CLASS, 2 TO 3 FEET

P E A C H E S

10 Mayflower, 10 Arp Beauty, 10 Mamie Ross, 10 Cling,
10 Augberta, 10 Early Elberta, 25 Elberta

P L U M S

5 America, 5 Gold, 5 Six Weeks

SPECIAL ROSE OFFER

One Dozen—prepaid \$2.50

All Extra Large, 2-Year, Field-Grown, No. 1 Bushes. Assorted
Colors: Red, Pink, White and Yellow. Strongest Plants of Our Selection.